



## Installation Instruction and Instruction for Use - Eye Wash Unit S0201 for Scrub Sinks

### Eye Wash Kit S0201 for Scrub Sinks

The Eye Wash Unit provides flushing fluid to both eyes simultaneously. The flushing streams rise to approximately equal heights on both sides. The two spray heads have a flip-top dust cover, internal flow control and in-line strainer to remove impurities from the water flow.

Once activated, the unit operates hands-free (stay-open valve) until intentionally closed.

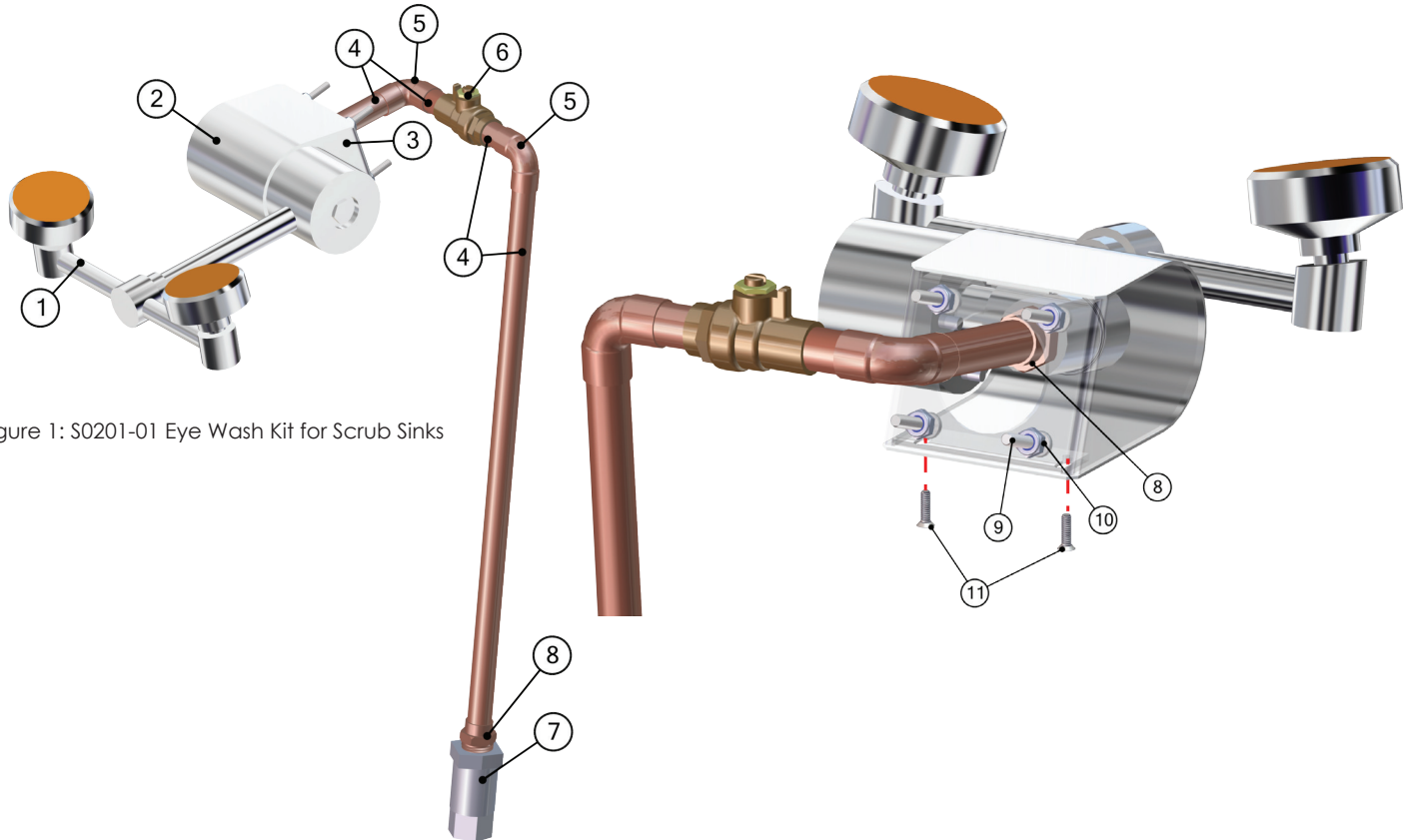


Figure 1: S0201-01 Eye Wash Kit for Scrub Sinks

Item #	Part #	Description	Qty
1	S0125-GUAR	Guardian Eye Wash Faucet	1
2	SMS0059	Eye Wash Cover	1
3	SMS0058	Eye Wash Housing	1
4	S0069	1/2" Copper Pipe	3 ft.
5	S0049	Elbow, 1/2" Copper 90	2
6	S0024	1/2" Balance Flow Control Valve	1
7	S0131	Check Valve 1/2 Spring Loaded	1
8	S0059	Adaptor, Male 1/2 X 1/2	2
9	H0015-06	Pan Head Screw 10-32 X 1.0" Long Stainless Steel	4
10	H0004-04	10-32 Nylon Lock Nut	4
11	H0006-05	#6-32 X 1/2 Flat Undercut Head Stainless Steel Screw	2

Information regarding this product is  
subject to change without prior notice.

Printed in USA  
Publication No. IFU-074 rev C  
March 2018



## Installation Instruction and Instruction for Use - Eye Wash Unit S0201 for Scrub Sinks

### Installation

1. Drill a hole pattern with the dimensions (shown in Figure 2) on the front face of the back sink basin wall. Locate the hole at the position indicated in Figure 3.

Mounting Hole Pattern - Scrub Sinks

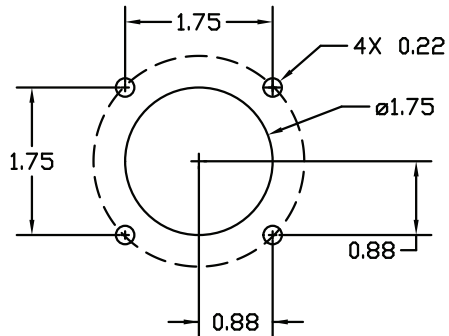


Figure 2: Hole Drill Pattern - Scrub Sinks

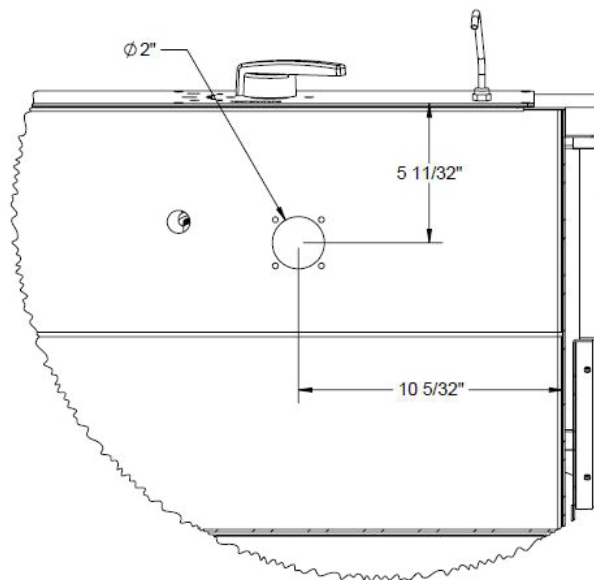


Figure 3: Hole location



## Installation Instruction and Instruction for Use - Eye Wash Unit S0201 for Scrub Sinks

2. Attach the Eye Wash Housing (SMS0058) to the front face of the sink basin wall. Secure with the supplied 4 pan head screws (H0015-06) and 4 nylon lock nuts (H0004-04). (See Figure 44 (Sink basin wall is shown half transparent for clarity.)

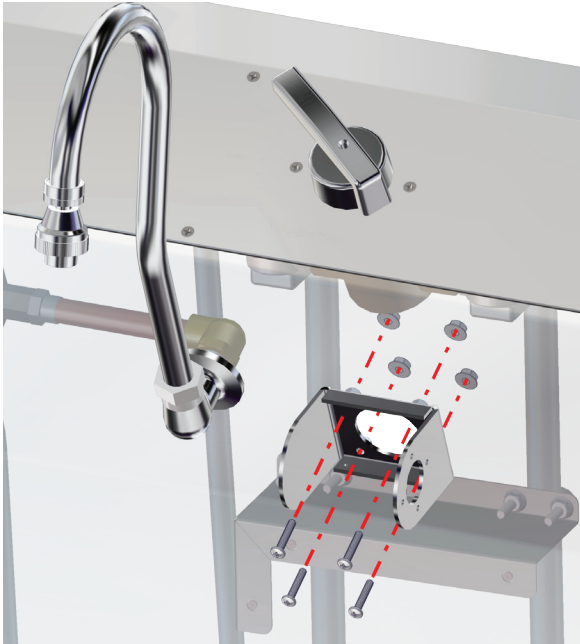


Figure 4: Attach Eye Wash Housing

3. After attaching the housing (SMS0058) to the sink basin, separate the 1/2" NPT female inlet and mounting shank from the eye wash unit. Place these within the housing (see Figure 55).

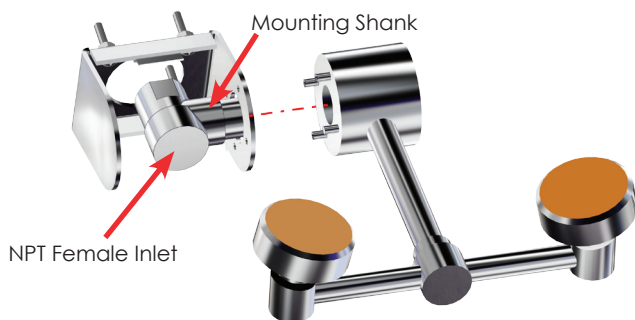


Figure 5: Locate NPT female Inlet & Mounting Shank

4. Re-attach the eye wash unit to the mounting shank, lining up the 4 studs with the 4 holes on the right side of the housing. (see Figure 66).



Figure 6: Re-attach Eye Wash Unit

5. See Figure 7. Attach Eye Wash Cover (SMS0059-01 - red arrow) to the Eye Wash Housing (SMS0058) with two #6-32 x 1/2" Flat Undercut Head Stainless Steel Screws (H0006-05 - circled in red).

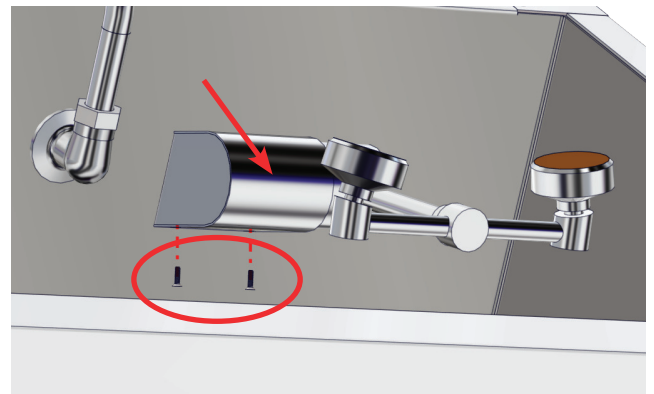


Figure 7: Attach Eye Wash Cover



## Installation Instruction and Instruction for Use - Eye Wash Unit S0201 for Scrub Sinks

### Assemble Plumbing

See Figure 88 to follow the steps below.

1. Attach male adapter (S0059) to the NPT Female Inlet.
2. Cut a small length (3 1/4") of copper pipe (S0069) and fit it into the male adaptor (S0059).
3. Attach an elbow pipe (S0049) to the pipe length.
4. Cut another small length (2 1/2") of copper pipe and fit it to the elbow pipe (S0049).
5. Attach one end of the Balance Flow Control Valve (S0024) to the pipe length.
6. Cut another small length (1 1/2") of copper pipe and attach it to the other end of the Balance Flow Control Valve (S0024).
7. Attach an elbow pipe (S0049) to the pipe length.
8. Attach a long length (16") of copper pipe to the elbow pipe (S0049).
9. Attach the other male adapter (S0059) to the pipe length.
10. Attach the Spring Loaded Check Valve (S0131) to the male adaptor (S0059)
11. Connect water line to Spring Loaded Check Valve (S0131).
12. Be sure to adequately secure the plumbing to the sink to reduce vibration.

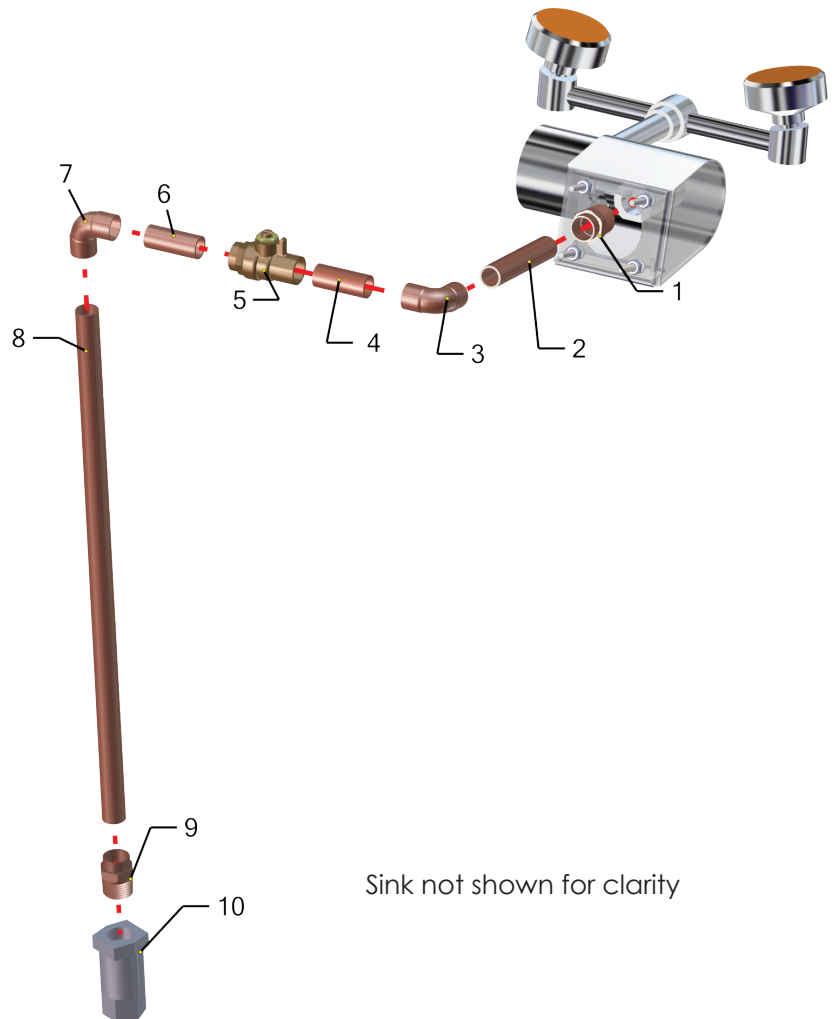


Figure 8: Plumbing Assembly



# Installation Instruction and Instruction for Use - Eye Wash Unit S0201 for Scrub Sinks

## Operation and Maintenance of S0201 Eye Wash Units

To activate the water flow, swing the Eye Wash Head Assembly down from its 100° vertical position to flat horizontal. The valve begins to open at approximately 60° from vertical (see Figure 99).

To ensure proper maintenance, the unit should be activated weekly for a period long enough to verify proper operation and ensure flushing fluid is available. This prevents sediment build-up within the eye wash unit and minimizes microbial contamination in the stagnant water.

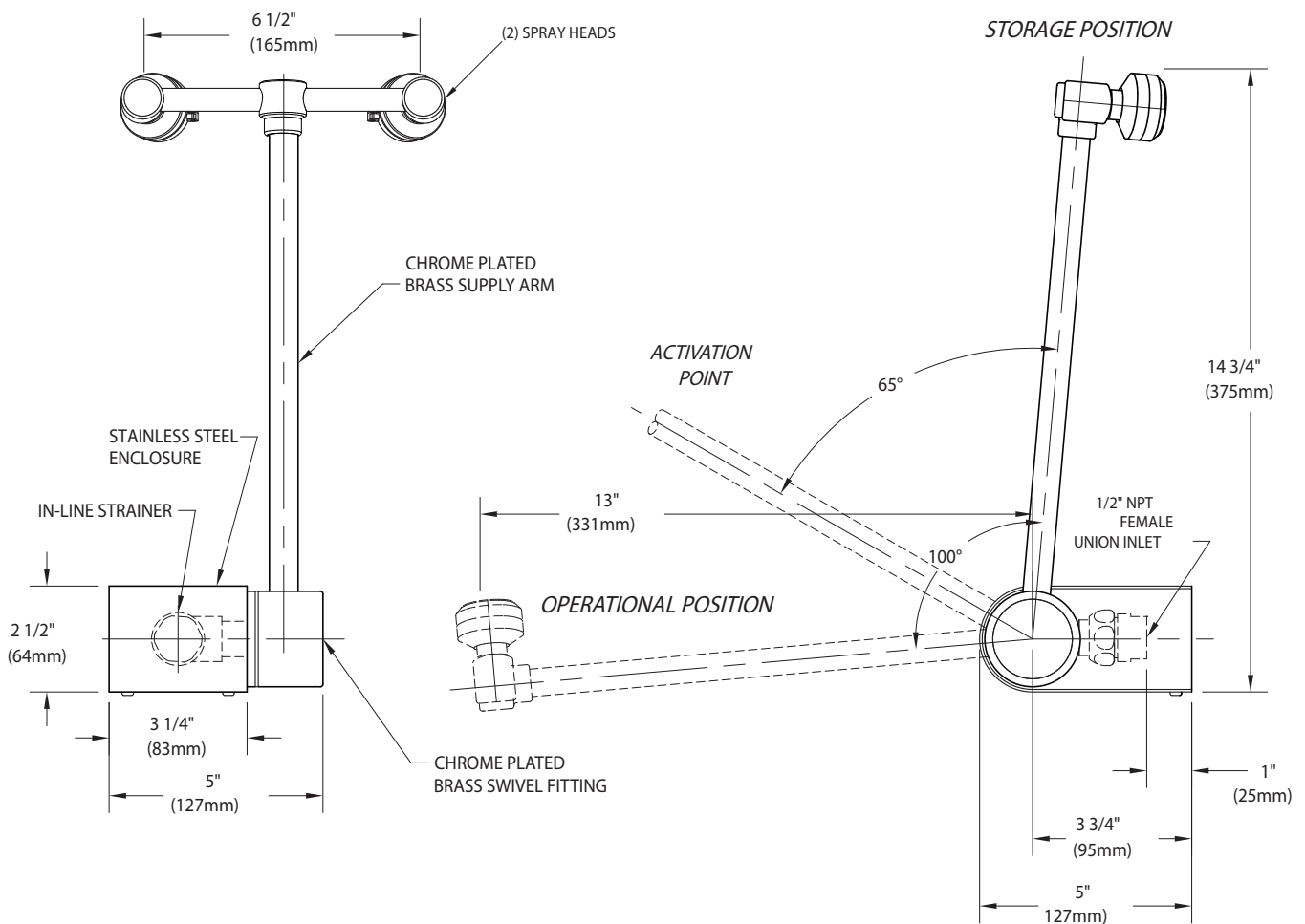


Figure 9: Operation of Eye Wash Unit