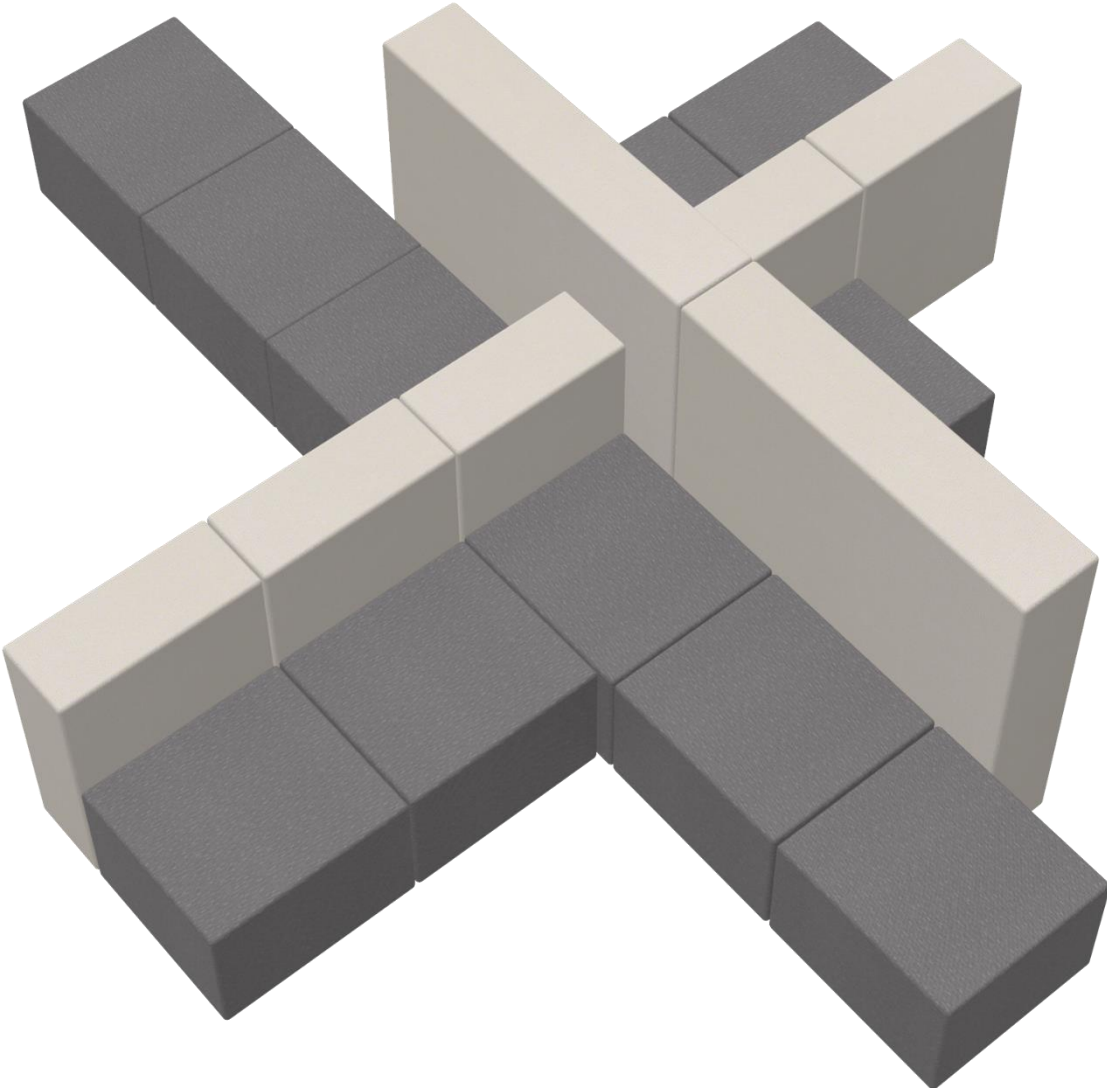


# CAPSULE

Lounge Seating

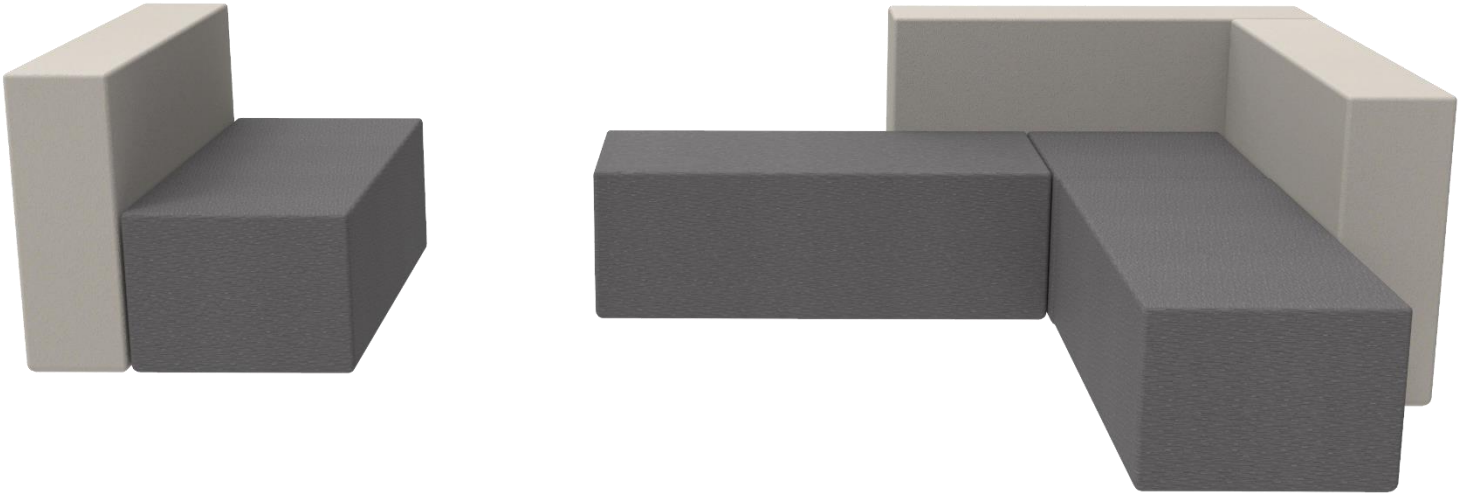
---



# CAPSULE

## Lounge Seating

---



Capsule is a sleek and modern upholstered lounge seating system for public spaces such as lounges, reception areas, lobbies, hallways, and is especially great for pediatric spaces. The Capsule system consists of five basic components which can be used as stand-alone pieces or connected to create modular seating groups.

### Features

- Solid hardwood/plywood construction
- 3/4" Nylon black slides
- No sag springs
- Tight upholstered
- Elastic webbing in seat backs

### Options

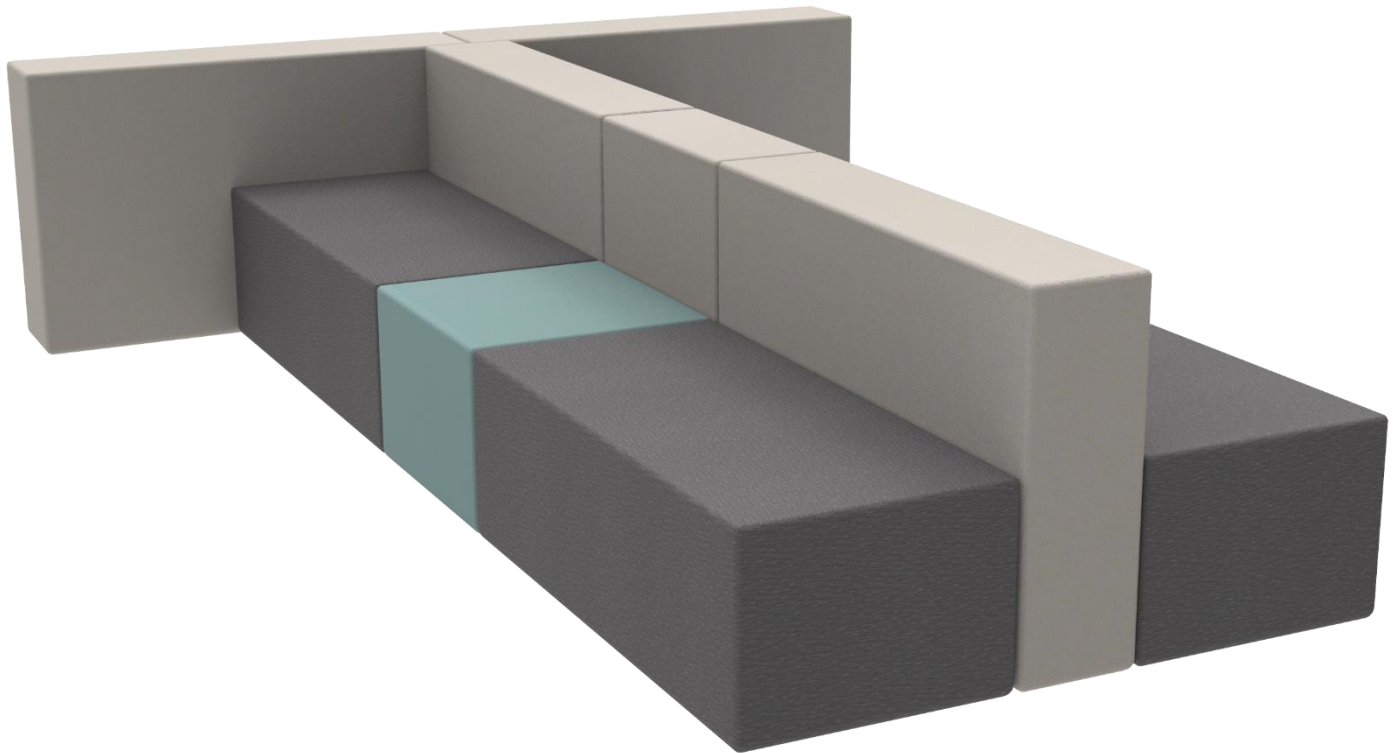
- Connecting brackets
- Power data center
  - Round or Rectangular
  - 72" or 120" cord
  - Available in black or silver
- Outside corner stitching detailing
- Back units available as solid surface



# CAPSULE

## Lounge Seating

---



	One Seat Bench	One Seat Back	Two Seat Bench	Two Seat Back	Wall
Depth	22"	10"	22"	10"	10"
Width	24"		48"		
Height	17"	31"	17"	31"	45"
Weight Capacity	300 lbs		525 lbs		N/A

Contact Us:  
Email: [Info@statmedicalcanada.com](mailto:Info@statmedicalcanada.com)  
Phone: 1-866-783-4076